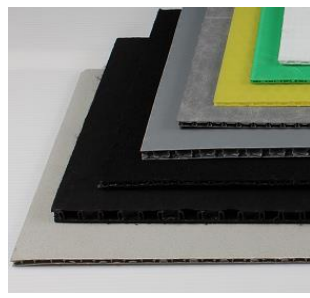


BOTTLE TRAY / LAYER



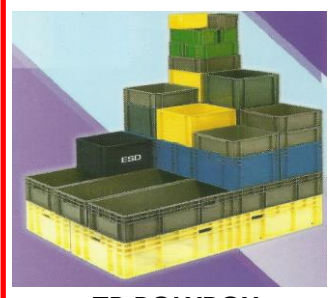
PP CORRUGATED SHEET



NEYCOM BUBBLE SHEET

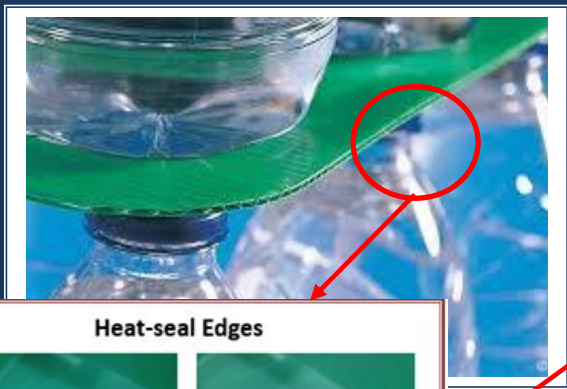


PP SOLID SHEET

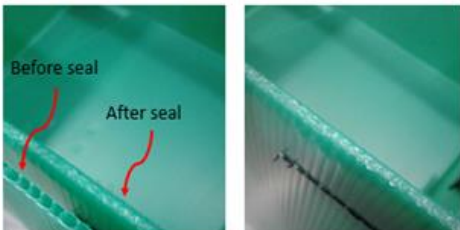


TP POLYBOX

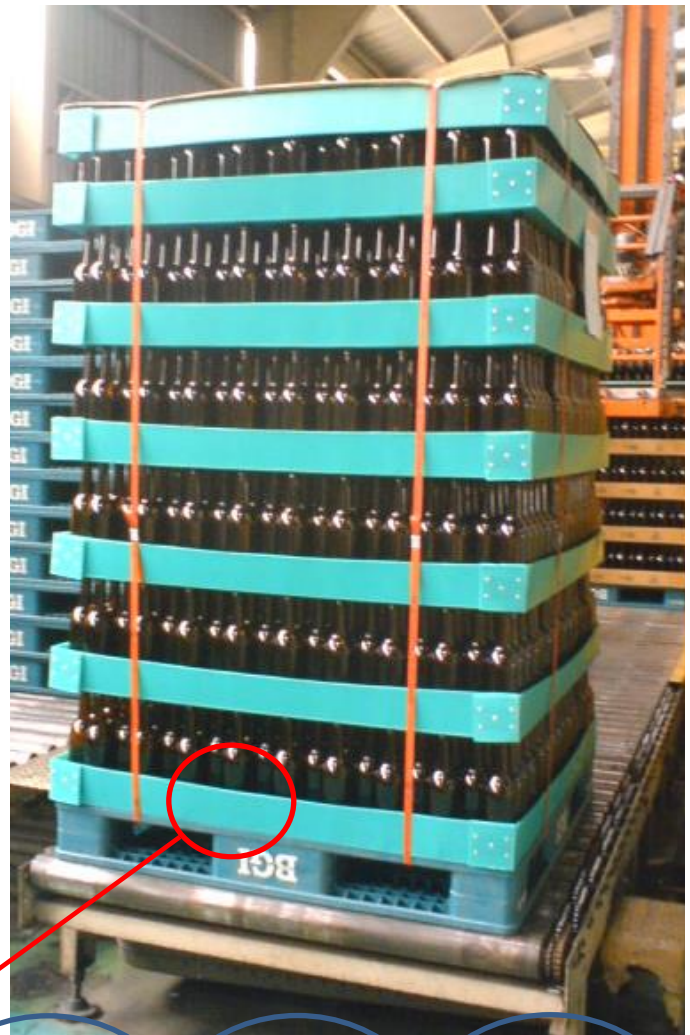
Bottle Tray is a simple but effective packaging method developed using PP corrugated / PP solid sheets, specially designed for the use in bottles / beverages / cans industries. It is stronger, more useful, and more hygienic than the other materials in sector. It shows extra strength against moisture and chemical actions, which means it can be easily cleaned and sterilized, and you wouldn't have to worry of damages caused by humidity and bugs!



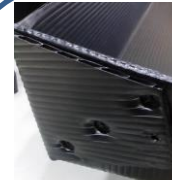
Heat-seal Edges



Uses of heat to seal the "holes" at the edges of the box, which help to prevent entering of water, dust and small insects.



Velcro Tapes



Ultrasonic



DIY Lock



Corlite Packaging Industries Sdn. Bhd.

Head Office (Mr. Ng): 03-32904399/6411, email: ng@corlite.com.my

Johor Office (Cindy): 07-3332375, email: cindycheng@corlite.com.my

Penang Office (Wawa): 04-5833398, email: wawa@corlite.com.my

ISO 9001
BUREAU VERITAS
Certification

